

# Mine Protection

## Use Case

Mining operations, whether extracting precious metals, coal, or other resources, face a unique set of security challenges. Remote locations, vast perimeters, and valuable assets make mines prime targets for theft, vandalism, and unauthorized intrusions. Traditional security measures like fences and guards can only do so much in such expansive and rugged environments.

SensoGuard's CovertEye RF cameras paired with the OutWatch Server—a cutting-edge solution that redefines mine protection through advanced surveillance in remote locations and AI threat detection.



### CovertEye RF Cameras

The CovertEye RF camera system is designed specifically for remote and challenging environments like mines. These wireless cameras combines high-resolution imaging with long-range communication capabilities for places without cellular infrastructure.



#### Covert Deployment

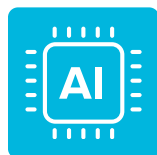
The cameras are compact and discreet, blending seamlessly into the mining landscape. This invisibility ensures intruders remain unaware they're being monitored, increasing the likelihood of detection and deterrence.

#### Long-Range RF Technology

Utilizing 2.4GHz RF transmission, the CovertEye RF cameras can send images and alerts to a base station up to 5 kilometers away.



Covert Deployment



AI Vision Model



Push Notification



Object Classification



No Cellular Infrastructure



Rugged Durability

### OutWatch Server

While the CovertEye RF cameras serve as the eyes of the operation, the OutWatch Server acts as the brain. This property AI analytics processes the data collected by the cameras, distinguish genuine alerts from false triggers.



#### Real-Time Alarm Verification

When a camera detects an intrusion, it sends the image to the OutWatch Server. The server's proprietary AI Vision analytics model analyzes the footage instantly, distinguishing between genuine threats (e.g., humans or vehicles) and false triggers (e.g., wildlife or weather events). This reduces nuisance alarms, allowing security teams to focus on real risks.



#### Push Notifications

Verified alarms are immediately sent as push notifications to smartphones or other devices, ensuring mine operators or security personnel can respond in real time.



#### Customizable Threat Detection

Users can adjust the sensitivity and specify the types of threats they want to prioritize—whether it's foot traffic near valuable equipment or vehicles approaching restricted zones. This adaptability ensures the system aligns with the mine's specific security needs.

SensoGuard's CovertEye RF cameras and OutWatch Server offer a transformative approach to mine protection. By combining invisible surveillance, long-range connectivity, and AI-powered analytics, this system delivers peace of mind to operators in even the most remote and rugged locations.