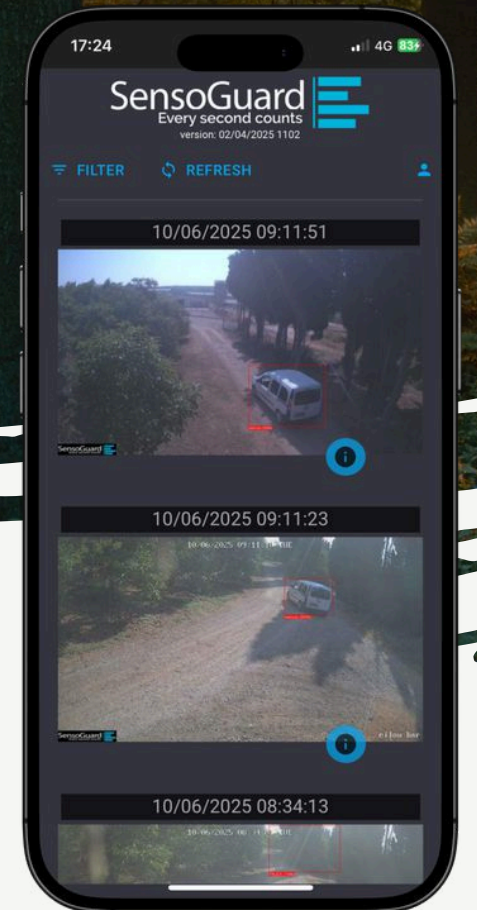


COVERTEYE 4G

CovertEye 4G is a fully autonomous cyber secured AES-256 tactical camera designed for remote, infrastructure-free locations. With 4G connectivity, smart motion detection, it delivers real-time visual alerts—even in the most rugged environments.



AI Visual Verification with **OutWatch**

“Secure Any Location — Without Any Infrastructure”



4G LTE Connectivity
Receive alerts in real-time anywhere, anytime.



AES-256
Secure communication via AES-256 bit encryption.



Battery / Solar Powered
Mobile tactical installation.



Motion & Tamper
PIR + vibration sensors for reliable alerts.



GPS Localization
Built-in GPS for precise location tracking.



Construction Sites
Protect gear and monitor progress



Wildlife Monitoring
Get remote photos of animal activity



Tactical Deployment
Quick setup, no infrastructure needed

OutWatch ALARM VERIFICATION

OutWatch is an AI-based alarm verification server designed for CovertEye 4G cameras. It filters incoming alerts, reduces false alarms by up to 95%, and delivers only verified detections, such as humans, vehicles, trucks and animals. Directly to your phone via push notification.



Up to 95% False Alarm Reduction

OutWatch filters alerts using advanced AI models to accurately classifying humans, vehicles, trucks, and animals and ensure only real threats reach your device.



One Dashboard to Control Them All

Manage and monitor all your CovertEye 4G cameras from a single centralized interface, no matter where they're deployed.



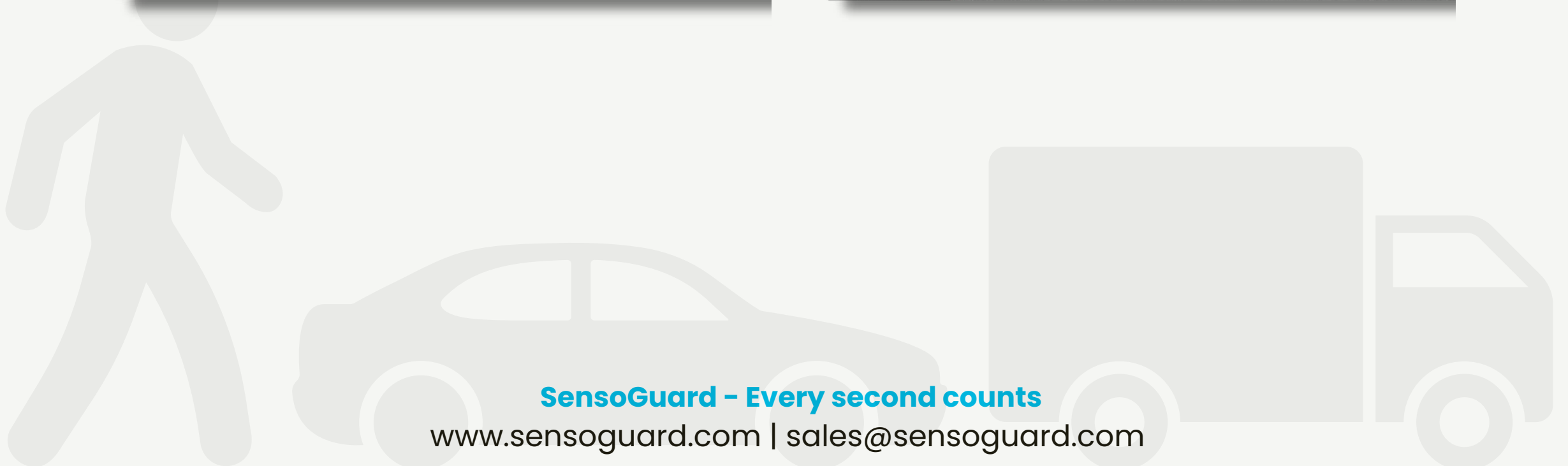
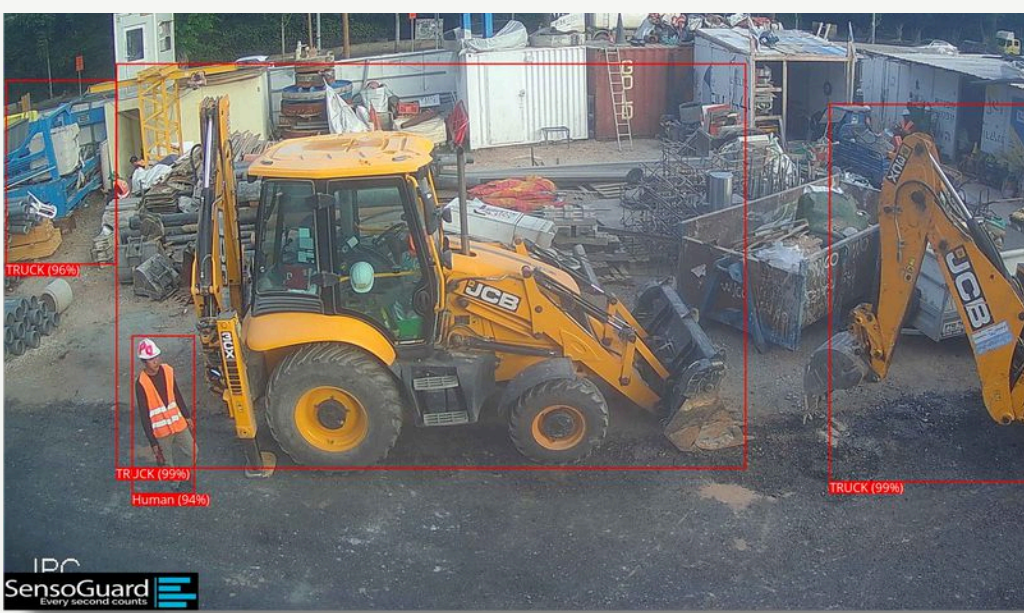
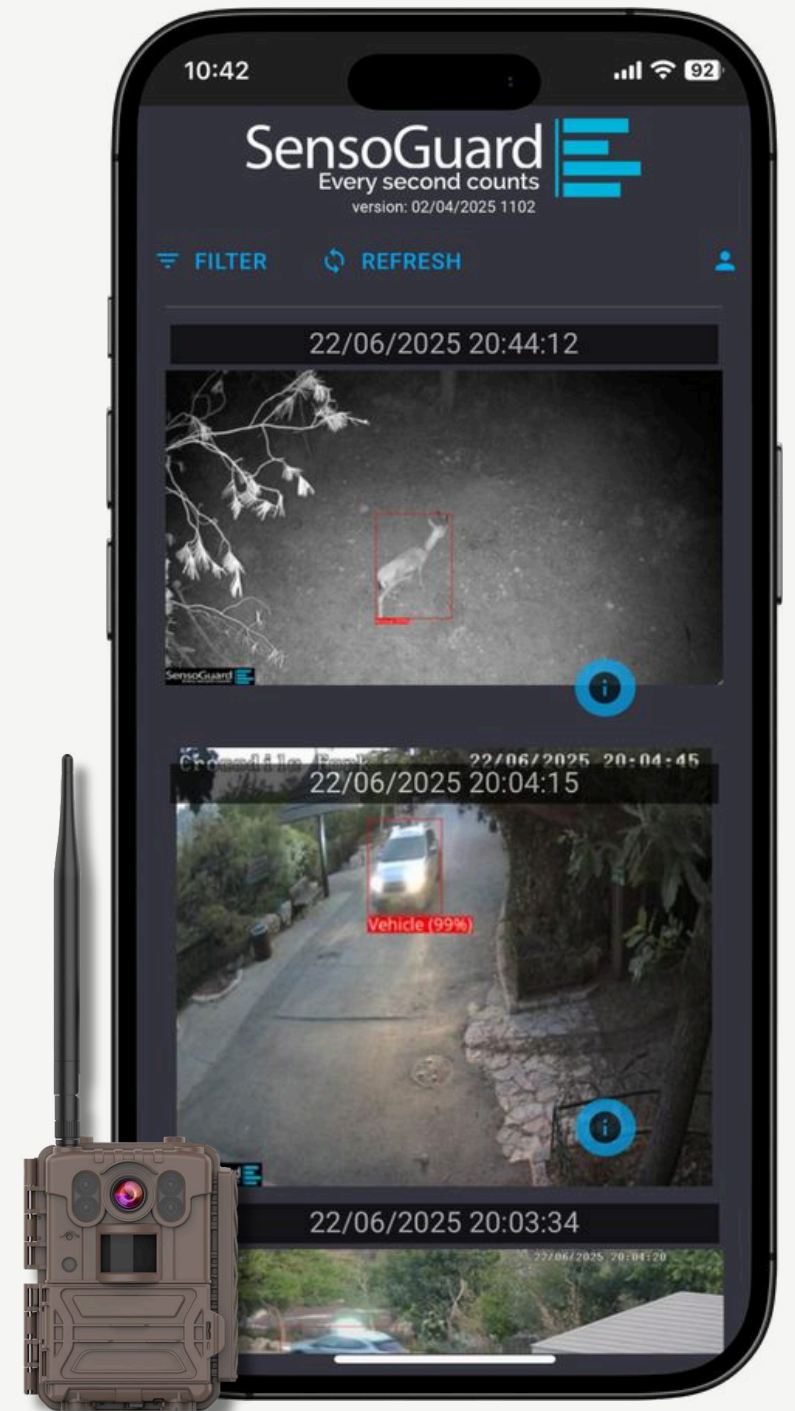
Remote Configuration

Easily change camera settings (motion sensitivity, resolution, schedules, etc.) directly from the OutWatch platform (PC or Mobile App), without needing physical access.



GPS Camera Tracking

See the location of each camera on an interactive map and get alert on camera movement. Ideal for fast response in tactical or mobile deployments.



SensoGuard - Every second counts

www.sensoguard.com | sales@sensoguard.com



COVERTEYE 4G

OTHER TRAIL CAMERAS

Image Quality	32MP 110° (Wide Angle)	5-12MP 60°
Encrypted Communication	AES-256 via HTTPS	-
Encrypted Storage	SD Card Encrypted with AES-256	-
Tampering Detection	Yes, via Embedded Vibration Sensor	-
Change Position	Yes, via GPS (OutWatch alert)	-
Analytics & Object Detection	Yes, False Alarm Reduction by 95%	-
Secured Cloud (GDPR Compliant)	Yes	-
PC & Mobile App	OutWatch	-
Integration with 3rd party systems	VMS & PSIM	-
Remote Control	Secured via OutWatch app	Non-Secured SMS Commands
Internal Battery	Rechargeable Lithium Pack	AA Batteries
Theft Protection	Locked for specific customer (non-transferable)	Open to use

“Trusted by military, law enforcement, and critical infrastructure operators worldwide.”

Camera

Picture Resolution	5MP/8MP/16MP/24MP/32MP
FOV (Field of View)	110° (f/1.85)
PIR Sensor	Up to 25m
Tamper Detection	Yes (Vibration Sensor)
IR LED	Up to 25m Range (940nm Invisible IR)
GPS Localization	Yes (Internal Antenna)

Communication

Communication	4G LTE
Frequency Bands	<u>Europe</u> <ul style="list-style-type: none"> • FDD-LTE: B1/B3/B5/B7/B8/B20/B28 • GSM: B2/B3/B5/B8
Secure Communication	AES-256 over HTTPS
OutWatch 2 Way Communication	Yes

System

Display Screen	2" LCD Screen
Memory Card	Up to 512GB MAX (Class 10)
Power Supply	Rechargeable Lithium Battery Pack/DC 12V/Solar Panel
IP Rating	IP67
Operating Temperature	-20°C to 60°C / -4°F to 140°F
Storage Temperature	-30°C to 70°C / -22°F to 158°F
Operating Humidity	5% - 90%
Stand-by Current	< 0.15mA (<6mAh/Day)

Physical Specifications

Dimensions	130mm x 104mm x 69mm / 5.1" x 4" x 2.7"
Weight	400g / 0.88lbs
Security Authentication	FCC, CE, RoH

Optional Accessories



12 Charger



12 Lithium Battery Pack



Solar Panel



Flat Antenna with 3m cable

